



Rice Growing Outlook REPORT



May
2026



Rice Growing Outlook Report

May, 2026

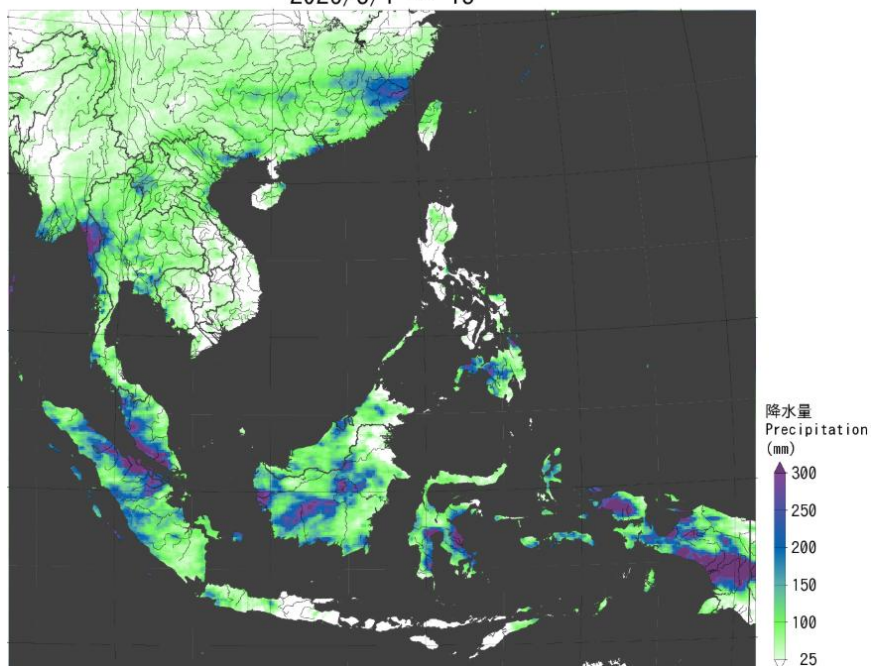
Overview

In the Northern side of SE-Asia, the harvesting of dry season rice has almost completed. The final production is estimated to be fair due to enough irrigation water and favorable weather condition, but the planted area has decreased slightly. On the other hand, the wet season rice is in field preparation to seeding stage. The planted area is forecast to decline due to lower rice price and rising cost of agricultural inputs.

In the Southern side of SE-Asia, the harvesting of wet season rice is in final stage. The yield is assessed to be generally favorable, supported by adequate water availability and sufficient sunlight throughout the crop growing period. On the other hand, the dry season rice is in seeding to early growing stage. The growing condition is generally favorable under normal weather condition.

JASMAI: Precipitation condition in early May

2026/5/1 ~ 15



Brunei

Wet season rice harvesting is complete with good yield.

Dry season rice is currently in the planting stage and about 30% of the targeted irrigated area has been planted. It is currently experiencing high solar radiation rates, which is good during this growth stage. However, if the low precipitation rates persist, it will be a concern for growth. Current outlook remains fair.

Cambodia

The national planting plan of wet season rice is 2.94 million ha. This month is in sowing stage, and it has reached 5% of planting plan. The weather condition is suitable for crop growth with enough sunshine, but the planting area might be less than last year.

Generally, the early growing condition of wet season rice is normal. However, this season's weather condition predicts continued drought and high temperatures, it concerns about yield reduction.

Indonesia

In May, wet-season rice harvesting entered fifth month, with the total harvested area estimated at approximately 5.4 million hectares. The yield is assessed to be generally favorable, supported by adequate water availability and sufficient sunlight throughout the crop growing period.

May also marked the second month of dry-season rice planting, with the total planted area reaching approximately 1.9 million hectares. Most farmers began intensive planting of rice at the beginning of the dry season, taking advantage of favorable moisture conditions.

Laos

The dry season rice is in the harvesting stage and nearly complete. The final harvested area is estimated to be around 98 thousand hectares. The yield condition in this season is generally good, supported by adequate water supply. The production is expected to be about 443 thousand tons, representing a slight increase than last year.

Meanwhile, land preparation for wet season rice has begun in some areas.

Malaysia

Harvesting of wet season rice has been completed. The yield is within the expected range, with no significant pest outbreaks or natural disasters affecting crop growth.

For the dry season rice, planting progress has reached about 69% of the target cultivation area. Crop conditions remain generally favorable, supported by stable weather conditions and adequate irrigation water supply.

Rainfall distribution is expected to remain near normal. However, some areas may experience relatively drier conditions towards the end of the month.

Myanmar

Planted of the dry season rice has been completed with 1.1 million hectares accounting for 96% of the national plan. Over 750 thousand hectares that accounts for 68.6% of the total planted area has been harvested. It produced 4.16 million tons of paddy with a yield of 5.5 tons per hectares. The yield is good and similar to last year.

The overall condition of the dry season rice is good and the harvesting work is going well although there were rainy days. In addition, this month is a time for field preparation of wet season rice in Myanmar.

Philippines

Dry season rice planted during the period of November to December was fully harvested. The average yield per hectare was recorded at 4.07 metric tons, a slight decrease of 0.7 percent from the same period last year.

Land preparation and planting of wet season rice has already started. The rainfall condition will likely be below normal in most parts of the country.

Thailand

The harvesting of dry season rice is nearly complete. Total production is expected to decrease by approximately 2.6% compared with last year, mainly due to a reduction in planted area. However, rice yields are projected to improve slightly, supported by favorable weather conditions during the growing period.

Meanwhile, wet season rice is currently in the land preparation state and rice seeding has started in some areas. The planted area is forecast to decline due to lower rice prices, and rising costs of agricultural inputs, including fertilizers, pesticides, and fuel.

Vietnam

In the North, the winter-spring (dry season) rice crop is in the young panicle formation to grain filling stages. Yield prospects are favorable, supported by conducive weather conditions and adequate irrigation water availability.

In South, the winter-spring rice crop is in the harvesting stage. About 1.48 million hectares had been harvested out of the total 1.92 million hectares planted. The yields on the harvested area are estimated at 6.9 ton per hectare with the same last season.

Meanwhile, the summer-autumn rice (rainy-season) crop in South is seeding stage. The planted area has reached 0.4 million hectares, equivalent to half of the area planted with the same last year. The slower planting progress is mainly attributed to delays in harvesting the winter-spring crop.

*JASMAI is an open and free system

<https://jasmai.maff.go.jp/en/>